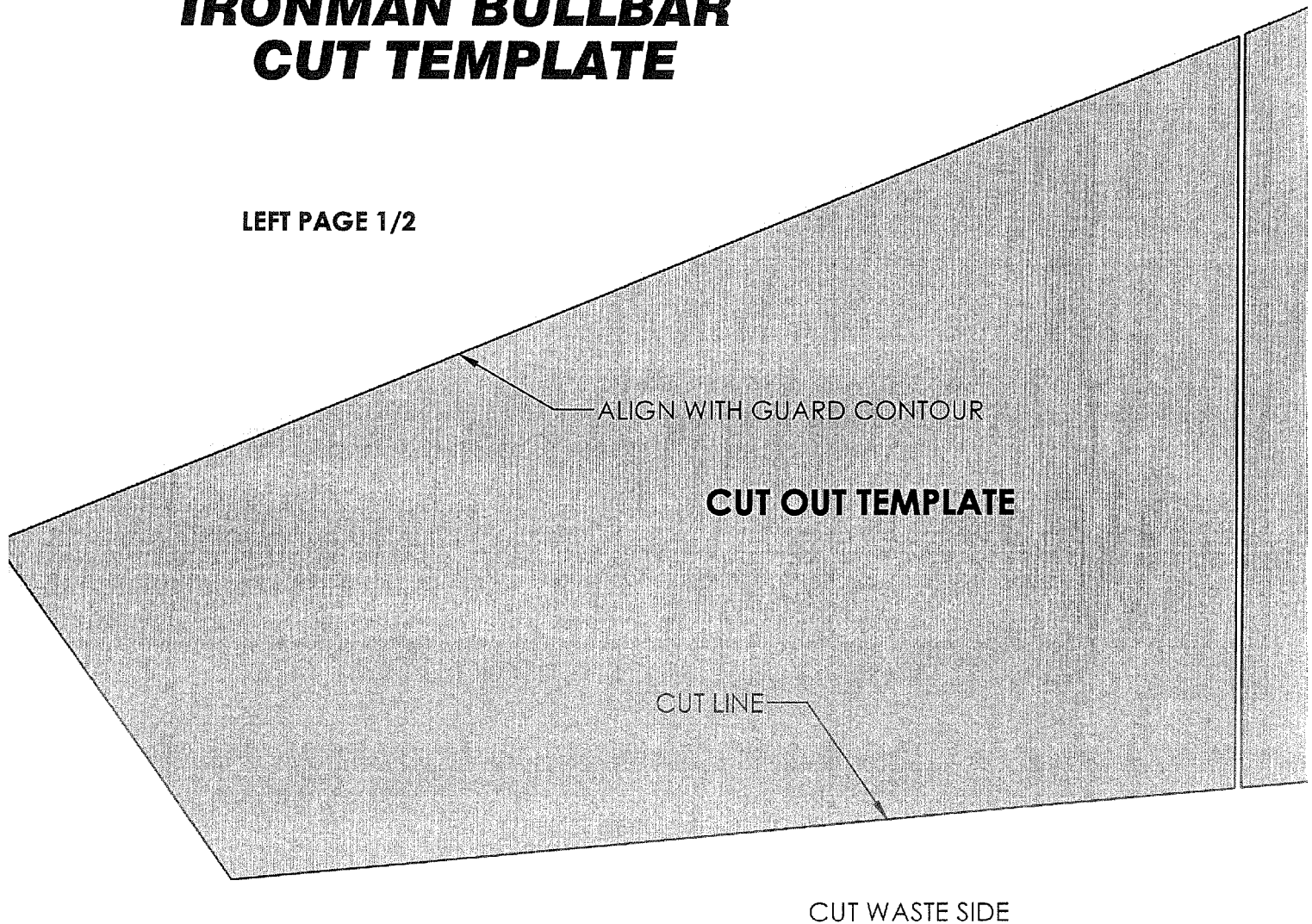


LANDCRUISER 200 BULL BAR FITTING INSTRUCTIONS



TOYOTA LANDCRUISER 200 IRONMAN BULLBAR CUT TEMPLATE

LEFT PAGE 1/2



1) BUTT PAGES TOGETHER, CHECK THAT DOUBLE LINES ARE PARALLEL AND 20mm APART.

2) TAPE PAGES TOGETHER AND CUT OUT PAPER TEMPLATE.

3) ALIGN TEMPLATE AS SHOWN ON VEHICLE AND CUT BUMPER WHERE INDICATED.

ALIGN WITH GUARD CONTOUR / HEADLIGHT

CUT OUT TEMPLATE

DOUBLE LINES ON EACH PAGE SHOULD BE PARALLEL AND 20MM APART, WHEN TAPING PAGES TOGETHER BEFORE CUTTING OUT TEMPLATE

CUT WASTE SIDE

CUT LINE

IRONMAN 4X4
CNR CENTRE AND WESTALL RD
CLAYTON VIC AUSTRALIA 3168
1300 731 137

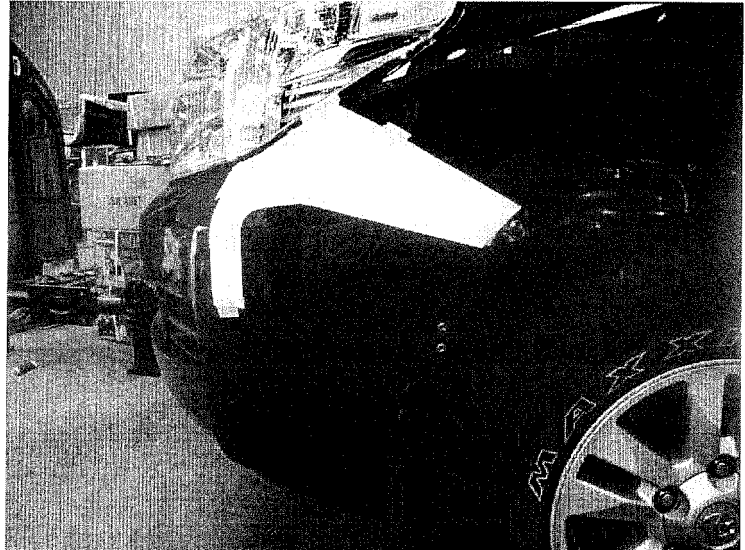
IRONMAN 4X4
1 HINKLER CRT
BRENDALD QLD AUSTRALIA 4500
07 3482 9500

www.ironman4x4.com

1. Remove number plate and grill. Store in safe place.



2. Using the template in the protection plate box, fit to the guards as shown. The template fits both sides

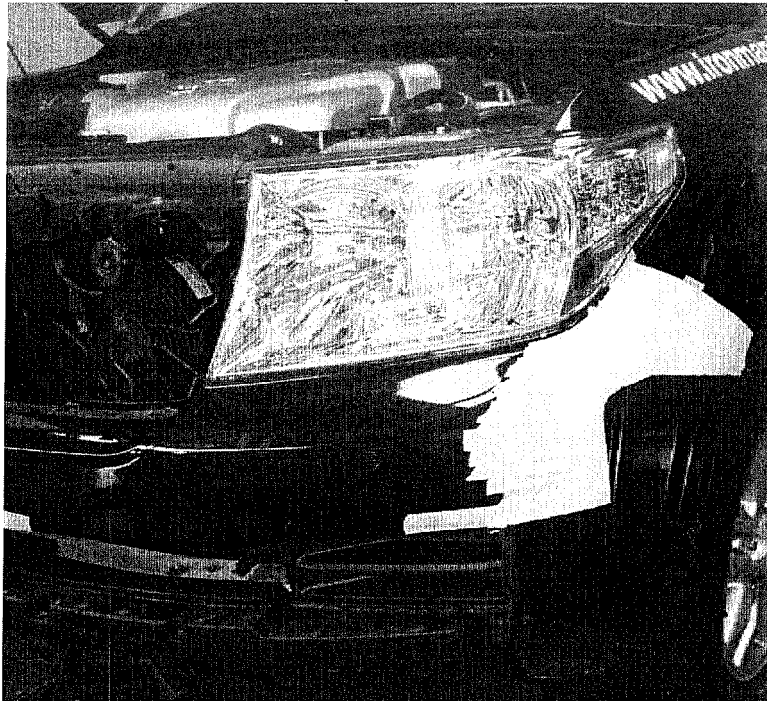


3. Once you have marked one side, swap the template over to the other

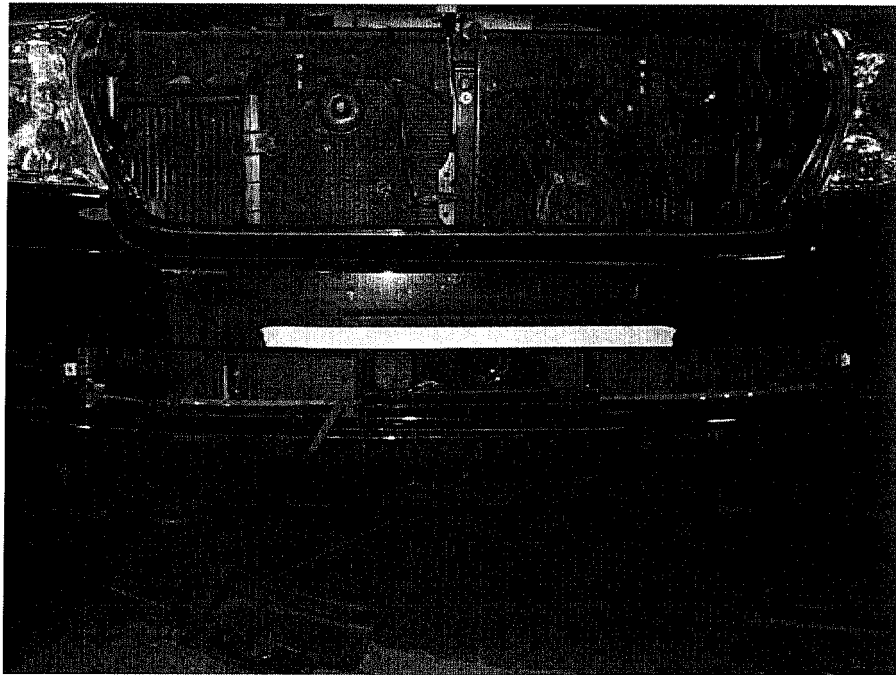




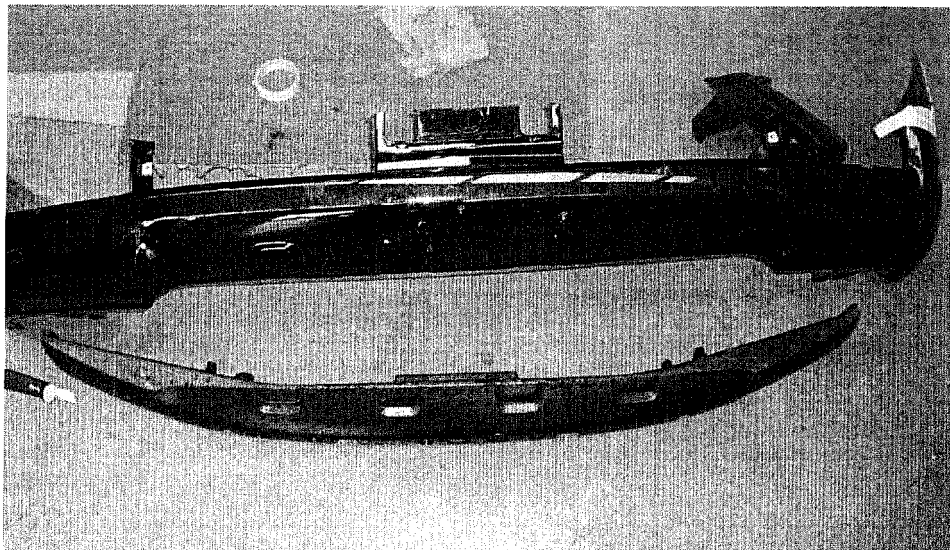
4. Mask up the bumper bar, ready to cut. Cuts are to be made where the red lines are, so you can remove the lower section of the bumper.



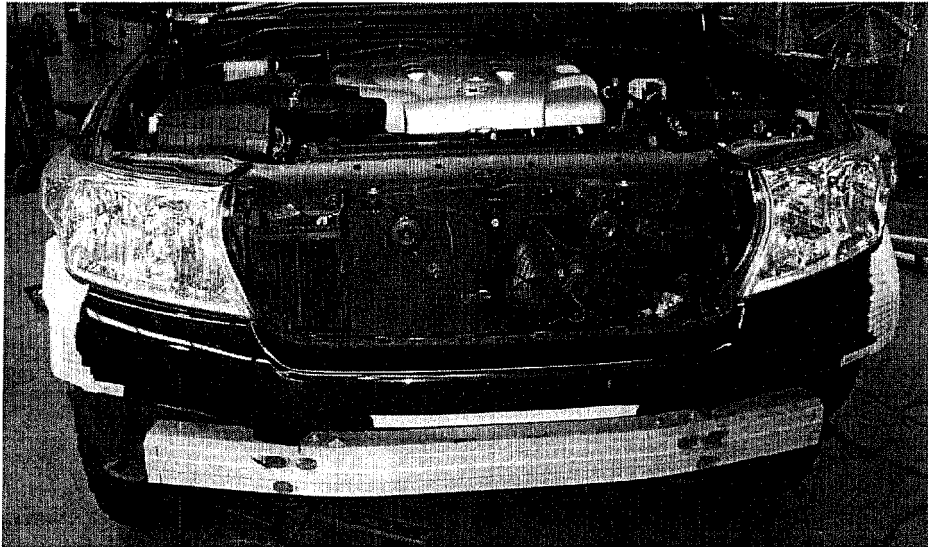
5. Cut the bumper, around the templates and in the places shown above with the red lines.



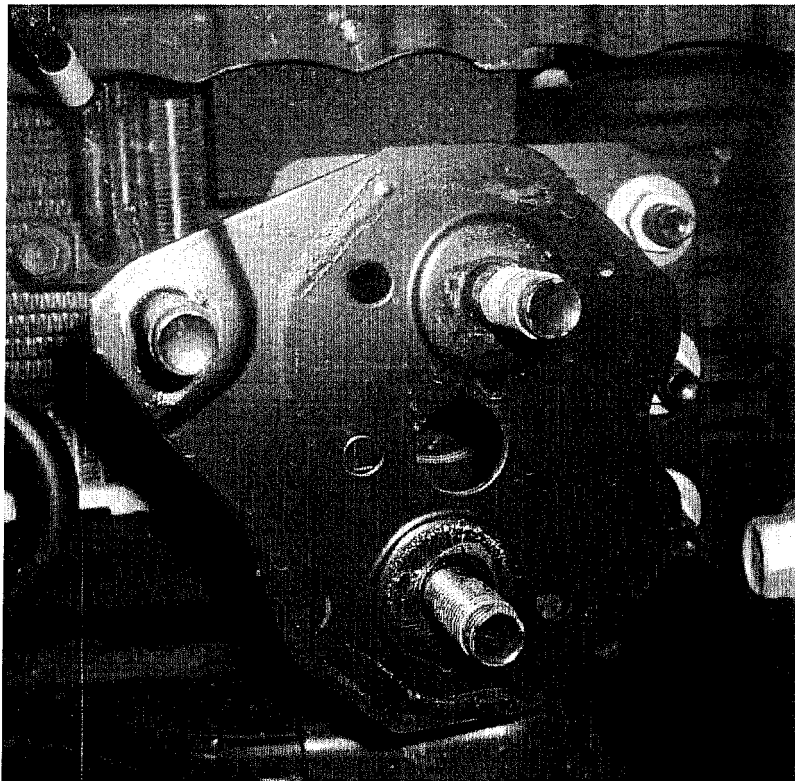
6. Cut the section under the number plate joining the upper and lower section of the bumper



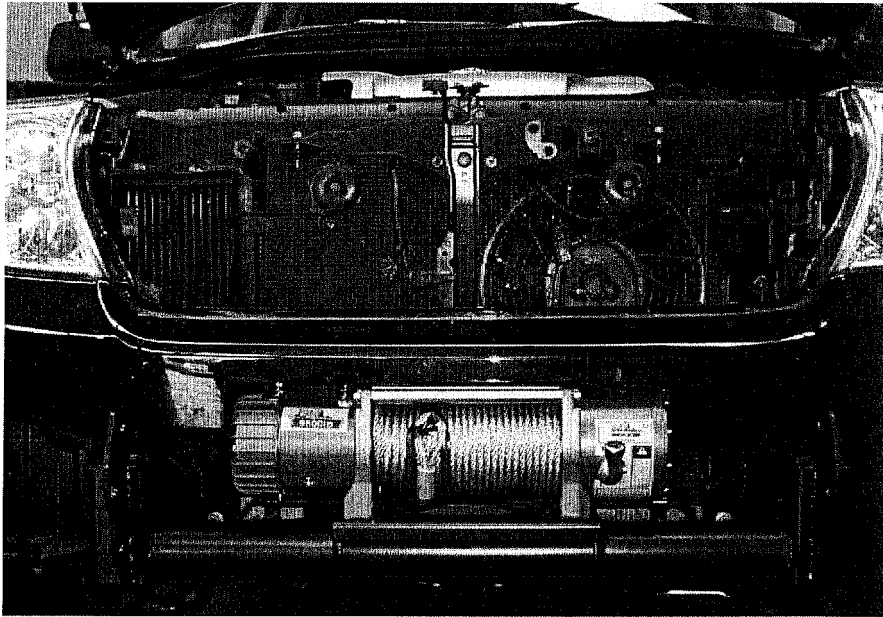
7. Remove lower section of the bumper



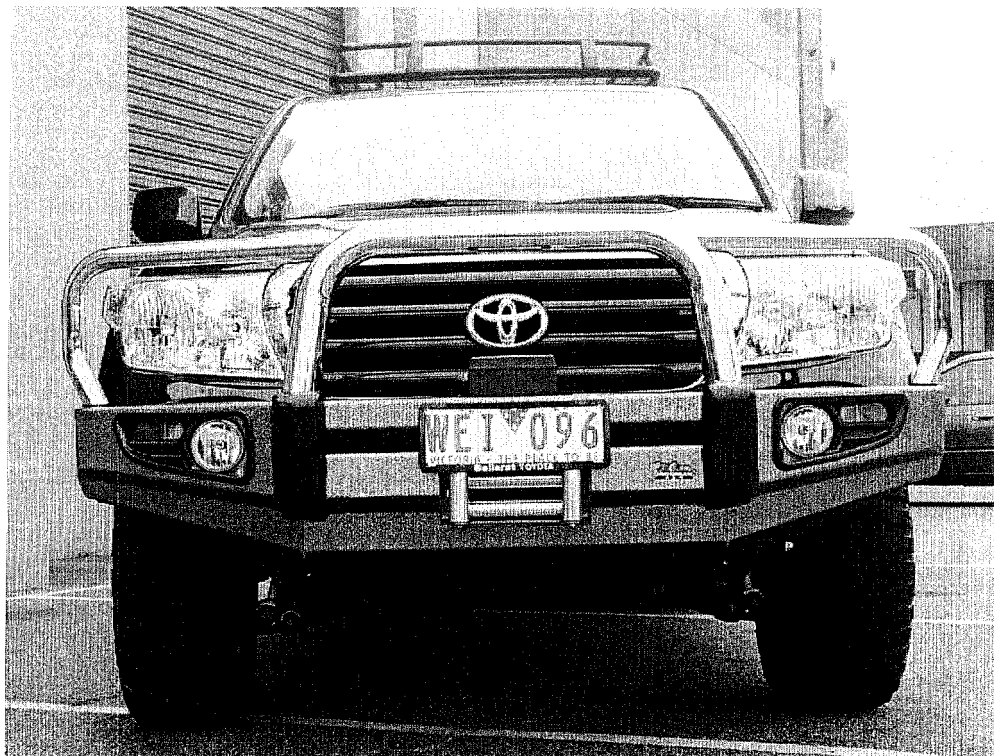
8. Remove the original bumper support



9. Remove the original bumper support brackets



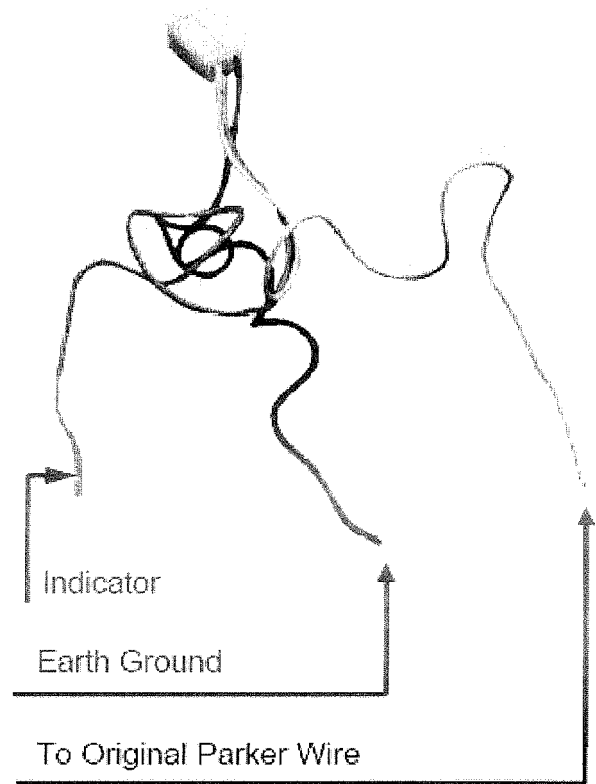
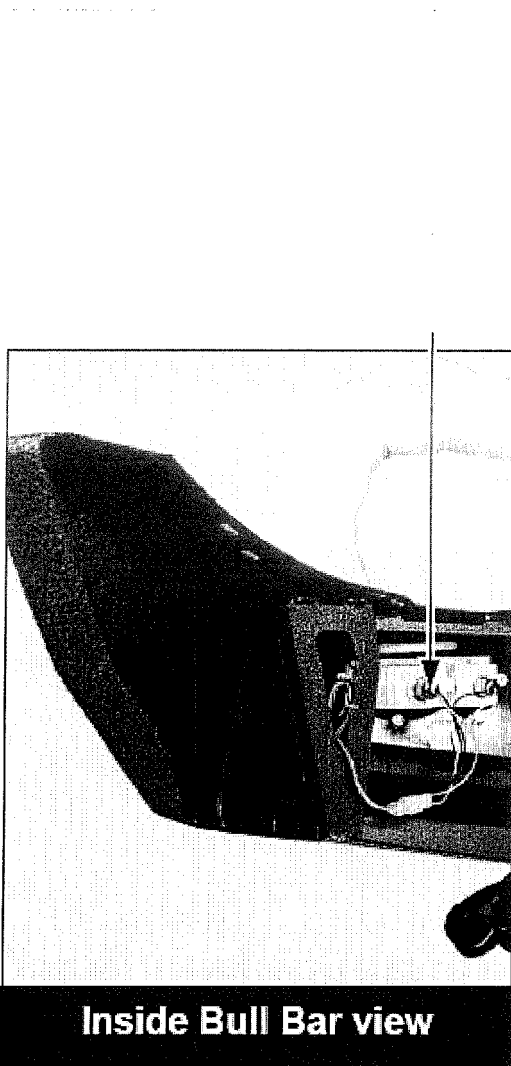
10. Fit the bracket and bolt to the original chassis



11. Fit the bull bar and tighten all bolts

WIRING DIAGRAM Parker / Indicator

Join Factory Light Plug to
Parker Indicator



WIRING DIAGRAM

Fog light

Please note, If the vehicle was fitted with factory fog lights, the original loom can be used.

