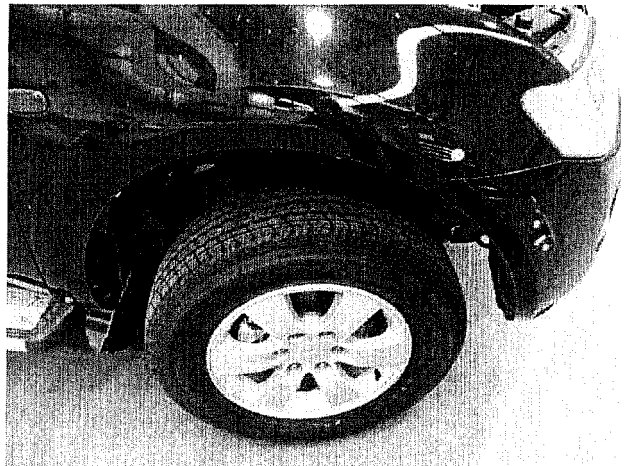


**MITSUBISHI TRITON ML GLX, GLX-R
BULL BAR FITTING INSTRUCTIONS**

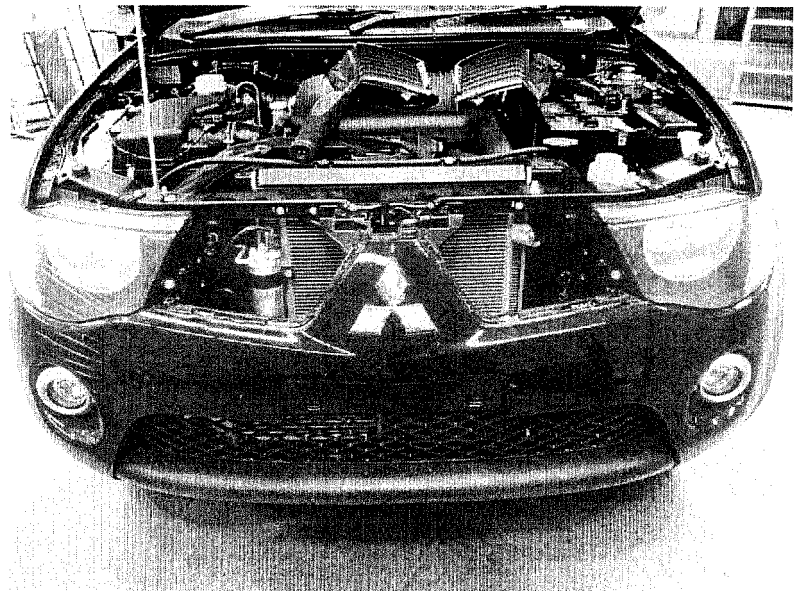
SUPPLEMENT INSTRUCTIONS FOR GL



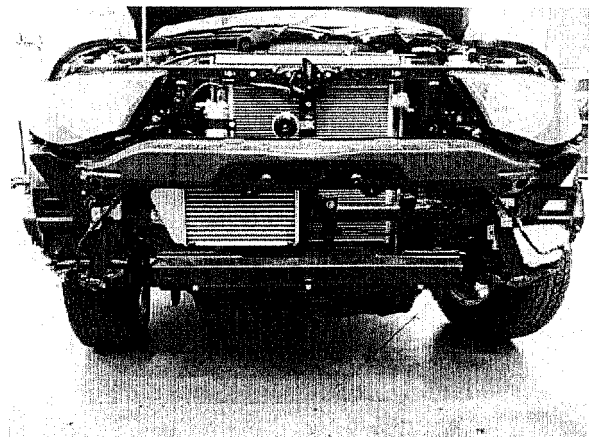
1. Remove number plate.
Store in safe place. Remove
front flares carefully.



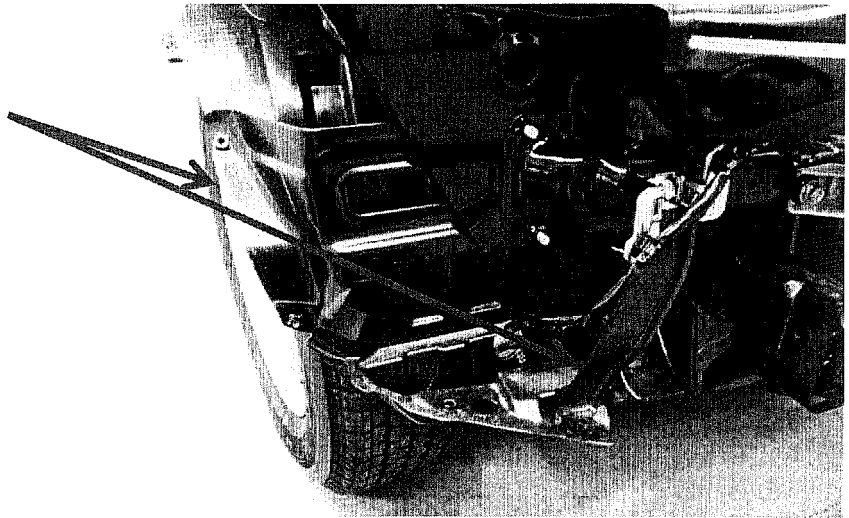
2. Remove the 2 grill
sections



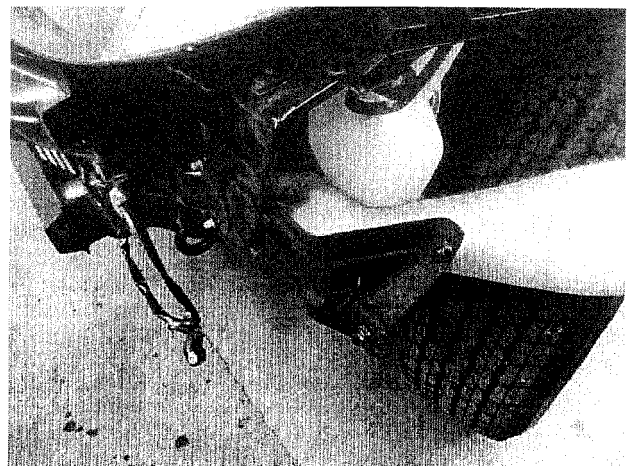
3. Remove the front
bumper assembly



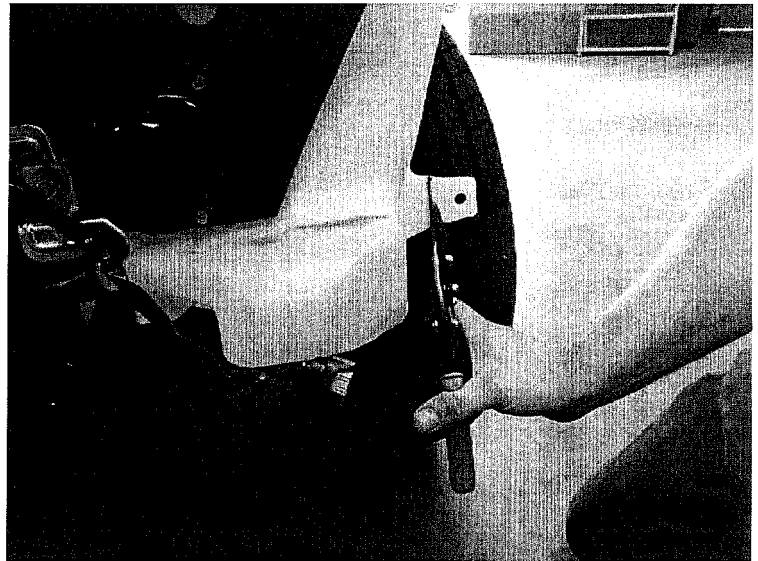
4. Remove bumper support brackets, 2 each side. Remove the inner guard liners.



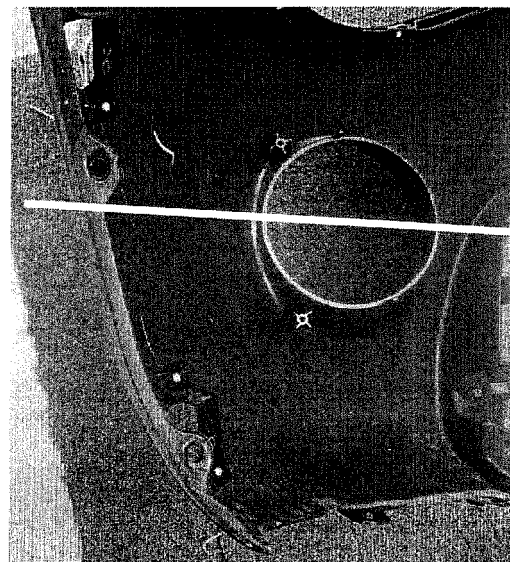
5. To remove the bumper support brackets on the washer bottle side, undo the 3 bolts that hold the washer bottle in place. Gentle move the washer bottle towards the wheel to access the bolts holding the support bracket. Once the bracket is removed, re-fit only 2 of the washer bottle brackets



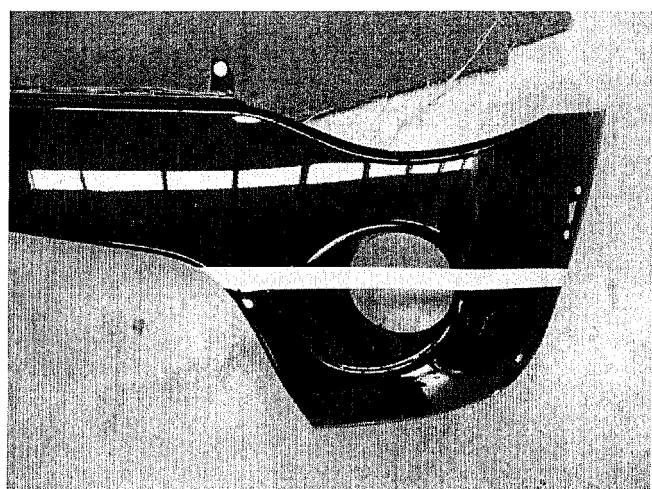
6. Cut the mounting tag off the outside of the washer bottle. Take care not to puncture the washer bottle.



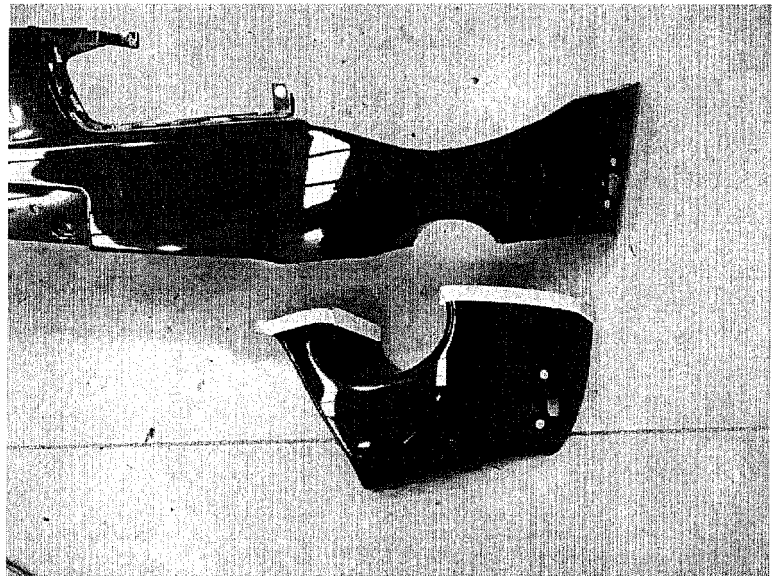
7. Remove the lower grill section from the bumper and mark the bumper as shown. Be sure to retain the inner guard mounting eyelet above the cut line.



8. Mask up the cut line on the front of the bumper.



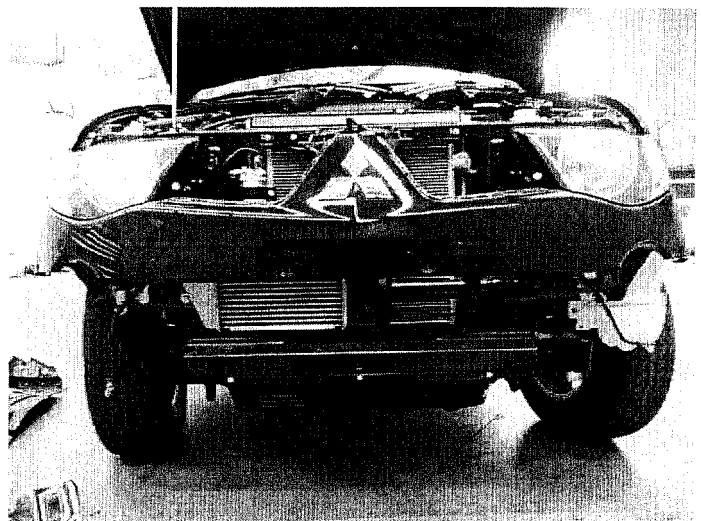
9. Cut the lower section of the bumper off. Make sure you have retained the mounting eyelet.



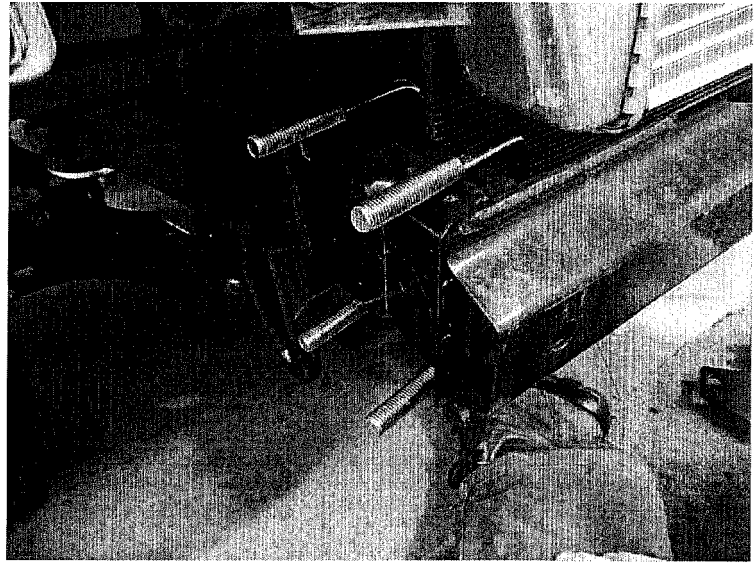
10. Bumper after the cut.



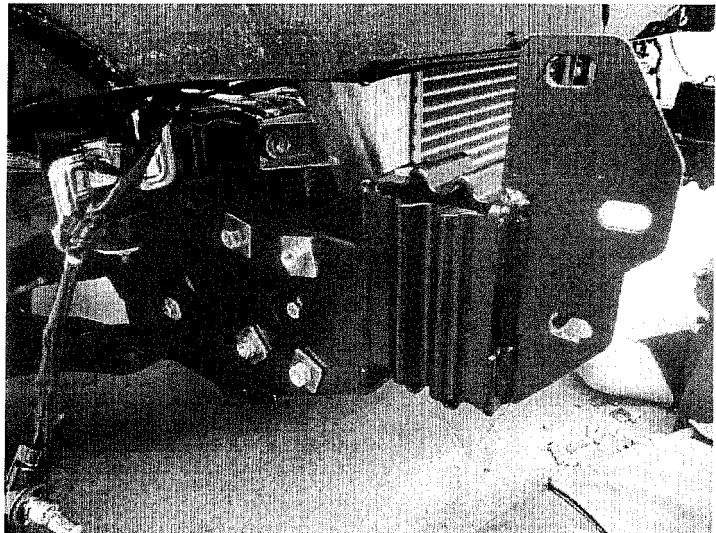
10. re-fit the bumper



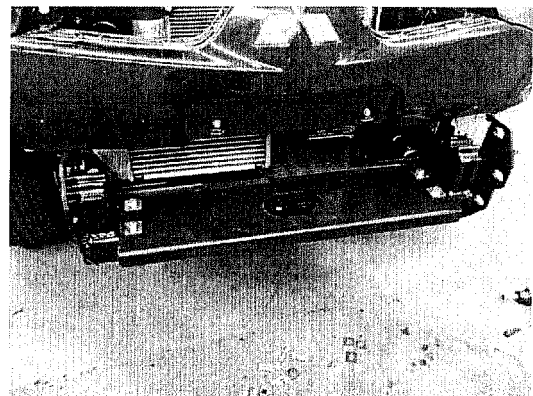
11. Fit the chassis the brackets using the u-bolts and the bolts supplied. Do not tighten yet.



12. See brackets loosely fitted.



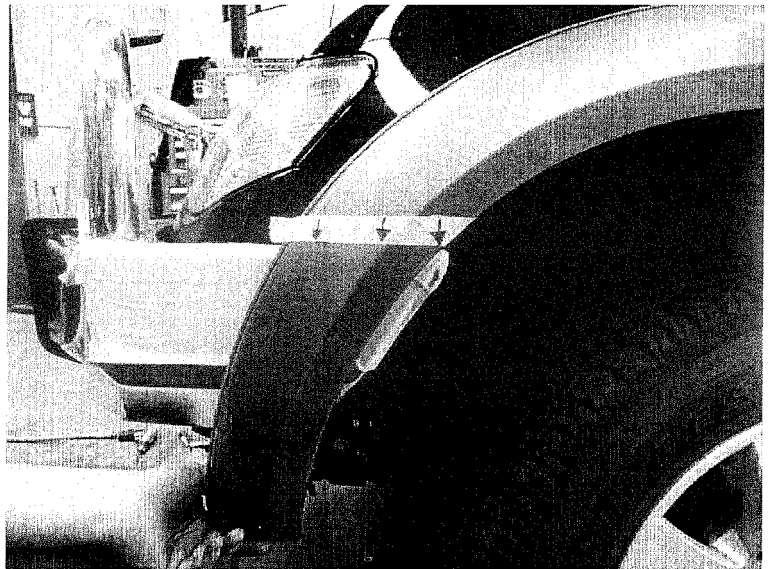
13. Fit the winch mounting plate between the chassis brackets. Tighten the winch plate first and then tighten the u-bolts and mounting bolts.



11. Fit the bull bar to the vehicle and align. Tighten the mounting bolts

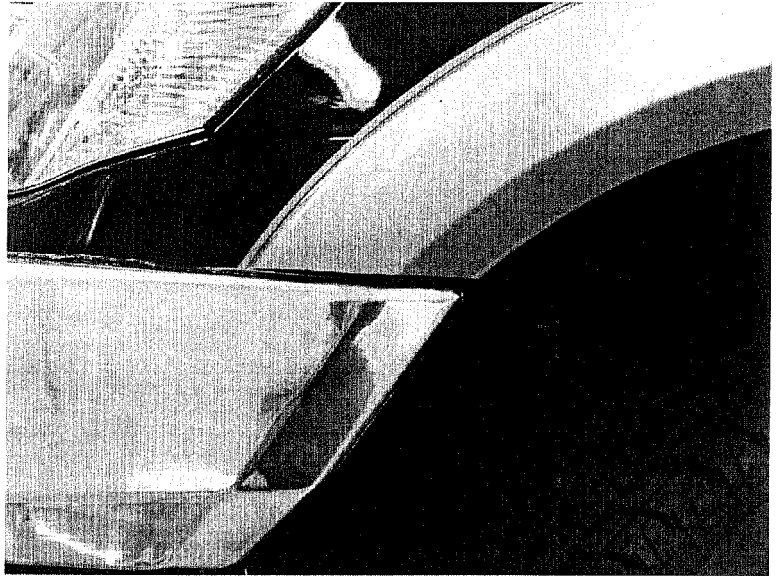


12. Temporarily re-fit the flares to the vehicle, allow the flares to sit on the outside of the bar. Mark the flare parallel to the top surface of the bar. Allow approximately a 5mm gap between the bar and the cut on the flare.



13. Remove the flare and cut

12. Re-fit the flares to the vehicle.



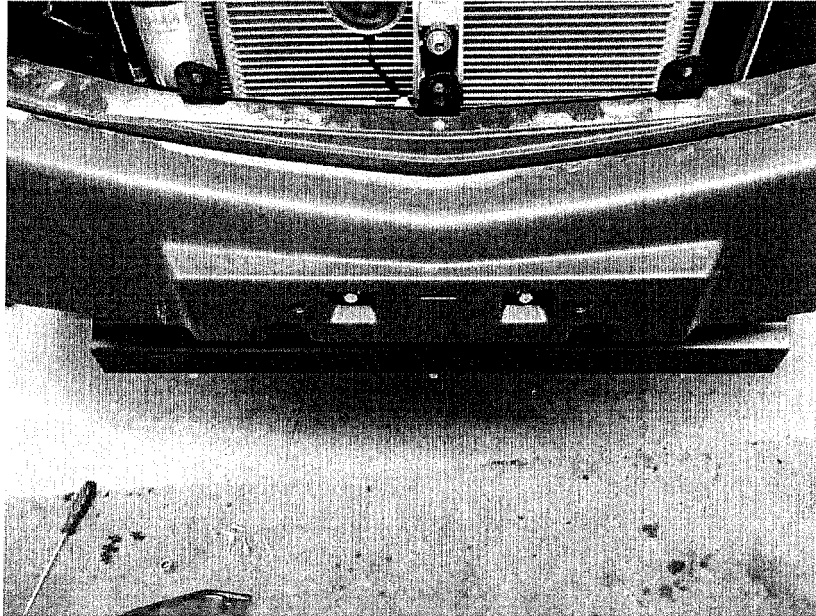
12. Fit the under bar protection plates. Refit the guard liners. Cut inner guard to suit protection plate profile.



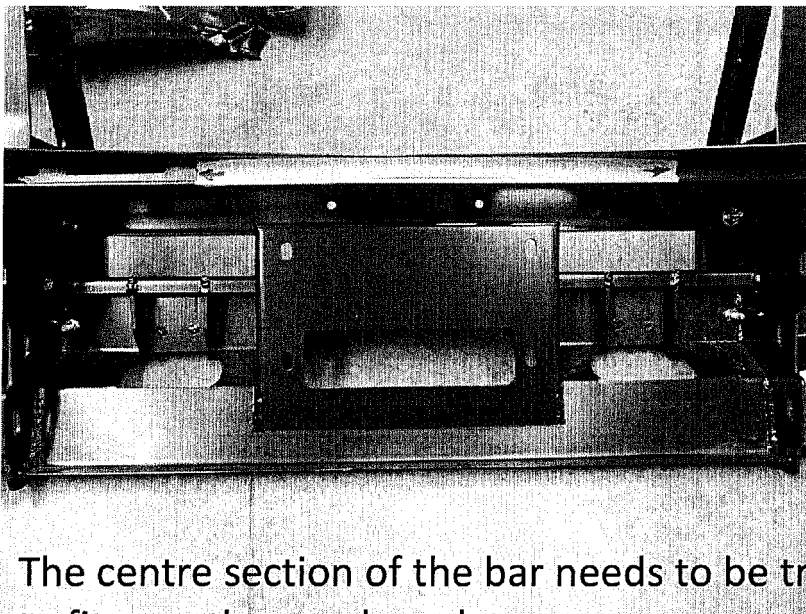
14. Check and tighten all bolts.



“GL” SUPPLEMENTARY FITTING INSTRUCTION

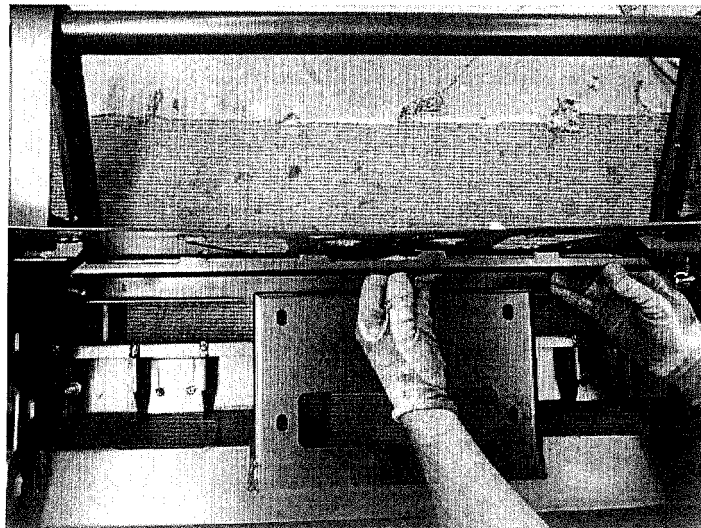


The GL model has the number plate mount protruding forwards.

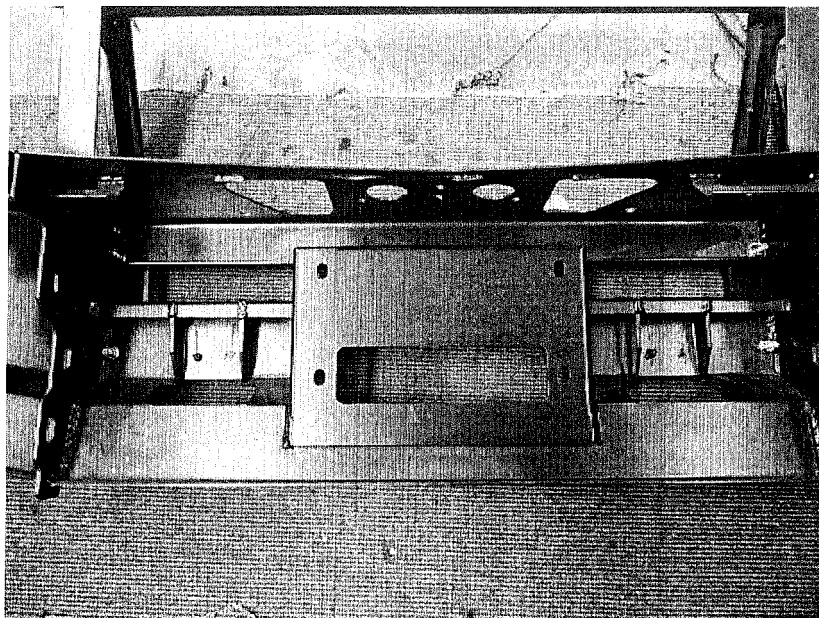


The centre section of the bar needs to be trimmed to fit over the number plate mount

14. Check and tighten all bolts.



Trim the centre channel as shown.

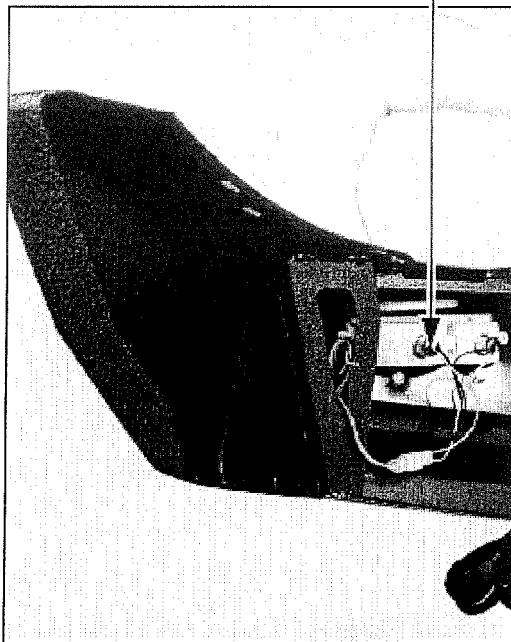


Paint all bare metal surfaces. Now the bar is ready to fit.

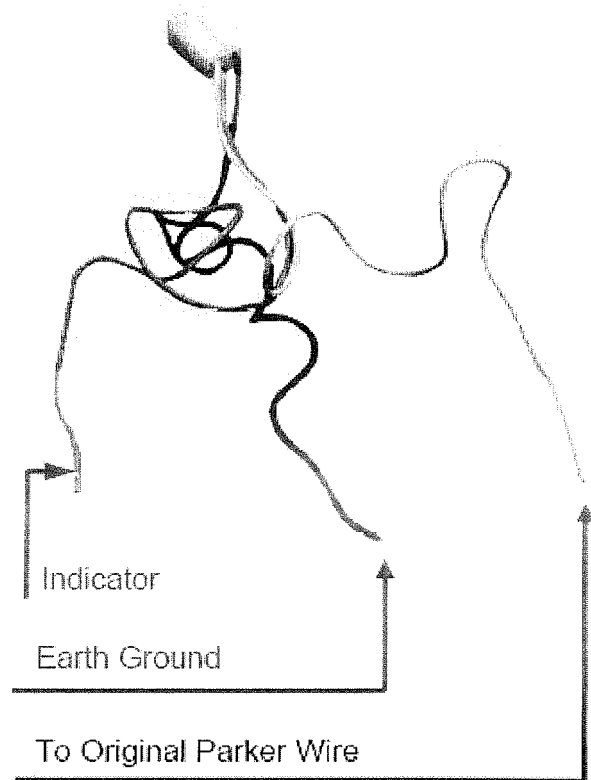
WIRING DIAGRAM

Parker / Indicator

Join Factory Light Plug to
Parker Indicator



Inside Bull Bar view



WIRING DIAGRAM

Fog light

Please note, If the vehicle was fitted with factory fog lights, the original loom can be used.

